



BARC Field Day Planning

June 6, 2022

ARRL Field Day

ARRL Field Day is the most popular on-the-air event held annually in the US and Canada. On the fourth weekend of June, more than 35,000 radio amateurs gather with their clubs, groups or simply with friends to operate from remote locations.



Many Hands Make Light Work

- New to the Club – great opportunity to “dive in”
- No previous Field Day Experience Required ..
 - Lots of “Tribal Knowledge” and experts available
- There is more to Field Day than just operating ...
- Lot's of opportunities to help out
- Lot's of opportunities to learn new things

Schedule

Friday June 24	Saturday June 25	Sunday June 26	July Meeting
0830 – Breakfast Sesuit Harbor Cafe	0800 – Radio & Laptop Setup. Test Equipment	0830 – Breakfast	
1000 - Pick up Equipment at container	1200 – Lunch Provided?	1400 – (1800 UTC)	
1130 – Antenna Farm Setup @ Sportmans Club	1400 – (1800 UTC) “Contest” starts	1401 – 1730 -N1MM Logs -Pack up Radios -Clean Up Hall -Take down Antenna Farm -Equip to Cont.	FD 2022 Hot WASH
	1800 – Pot Luck Dinner		

Friday Setup - Health & Safety

- Hard Hat & Work Gloves/Protective Eye Wear
- Closed Shoe wear
- 360 Situational Awareness
- Good Body Mechanics and Teamwork
- Water & More Water
- Headgear/Sunglasses/Sun Screen
- Bug Repellent
- Rain gear???



General Rules and Guidance

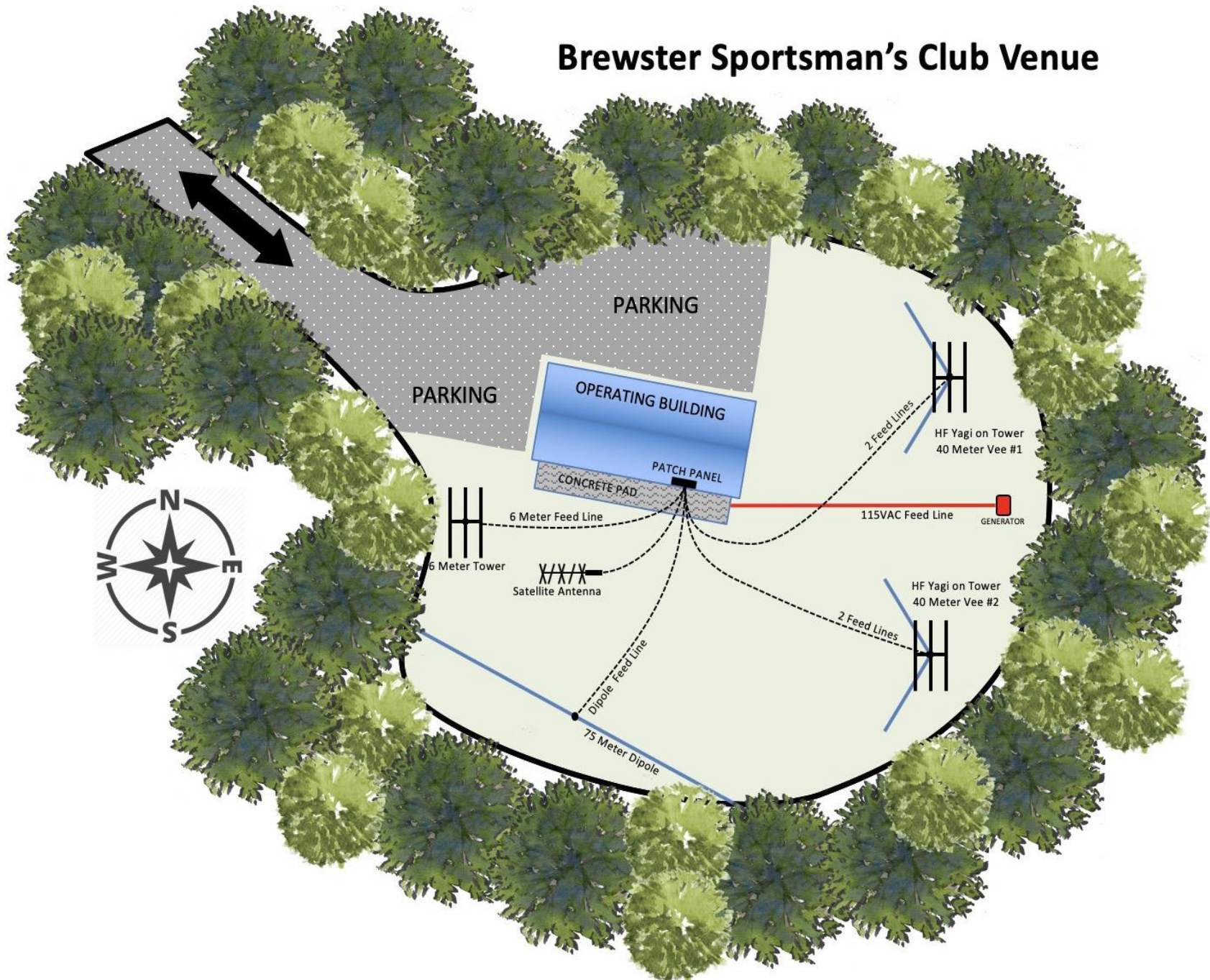
- **Safety is Rule 1 - TAM / K1TAG is our Safety Officer**
- **All other rules begin with Have Fun! Experiment and Practice.**
- **Maintain situational awareness for safety and security**
- **Please sign into and out of the Field Day Site**
- **All visitors should sign into the visitors log book. Visitors should be escorted in the operating areas.**
- **Please report all injuries (to Tam, Bruce or Norm) no matter how small – so we can learn from it / prevent it**
- **Mark all your material and supplies**
- **Return borrowed tools to the location where you borrowed them from – ideally notify the owner about what you are borrowing**
- ***Don't pass a borrowed item on to someone else –they won't know where to return it.***

Friday - Antenna Farm

On Friday .. We'll be setting up ..

- 40 ft tilt up tower with 20-15-10 Tri-bander
- Attach a 40 meter beam to the side of the tower
- 80 Meter Dipole
- 6 Meter Beam
- 2 m vertical antenna to monitor repeater

Brewster Sportsman's Club Venue



Brewster Sportsman's Civic Club
280 Tubman Rd
Brewster, MA 02631

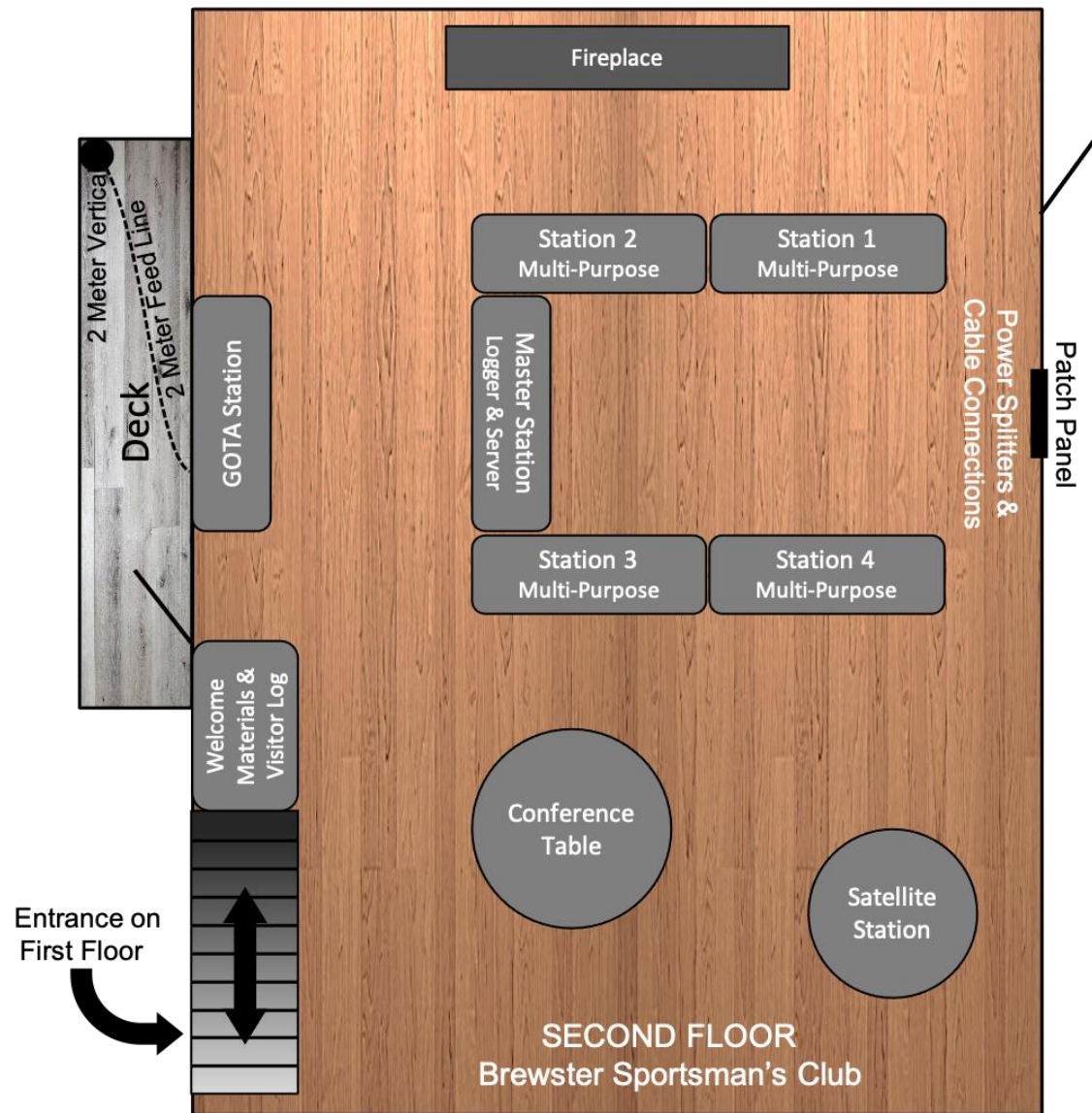


ARRL Field Day Safety Officer Checklist – Tam / K1TAM

To qualify for the 100-point Safety Officer bonus, a group must appoint a qualified person/s who are present at their site from the beginning of set-up until the end of break-down. The Safety Officer must certify in writing all of the points below. A completed, signed copy of this checklist must be included with the group's supporting documentation.

- .Fuel for generator properly stored.
- .Fire extinguisher on hand and appropriately located.
- .First Aid kit on hand.
- .First Aid, CPR and AED trained participant/s on site for full Field Day period.
- .Access to NWS alerts to monitor for inclement weather
- .Tent stakes properly installed and marked.
- .Temporary antenna structures properly secured and marked.
- .Site secured from tripping hazards.
- .Site is set up in a neat and orderly manner to reduce hazards.
- .Stations and equipment properly grounded.
- .Access to means to contact police/fire/rescue if needed.
- .Safety Officer is designated point of contact for public safety officials.
- .Minimize risks and control hazards to ensure no injuries to public.
- .Safety Officer or a qualified designated assistant was on site for the duration of the event.
- .As necessary, monitoring participants for hydration and ensures adequate water supply is available.

Saturday – 0800 - Radio Setup



Each HF Station

- Transceiver
- Tuner
- Laptop
- Headphone Splitter (to support 1 logger + 1 operating)
- Headphones .. BYOP if possible
- CW Stations (if equipped)
 - Paddle
- Scratch paper / pad
- N1MM Quick Ref Guide / Quick Keys

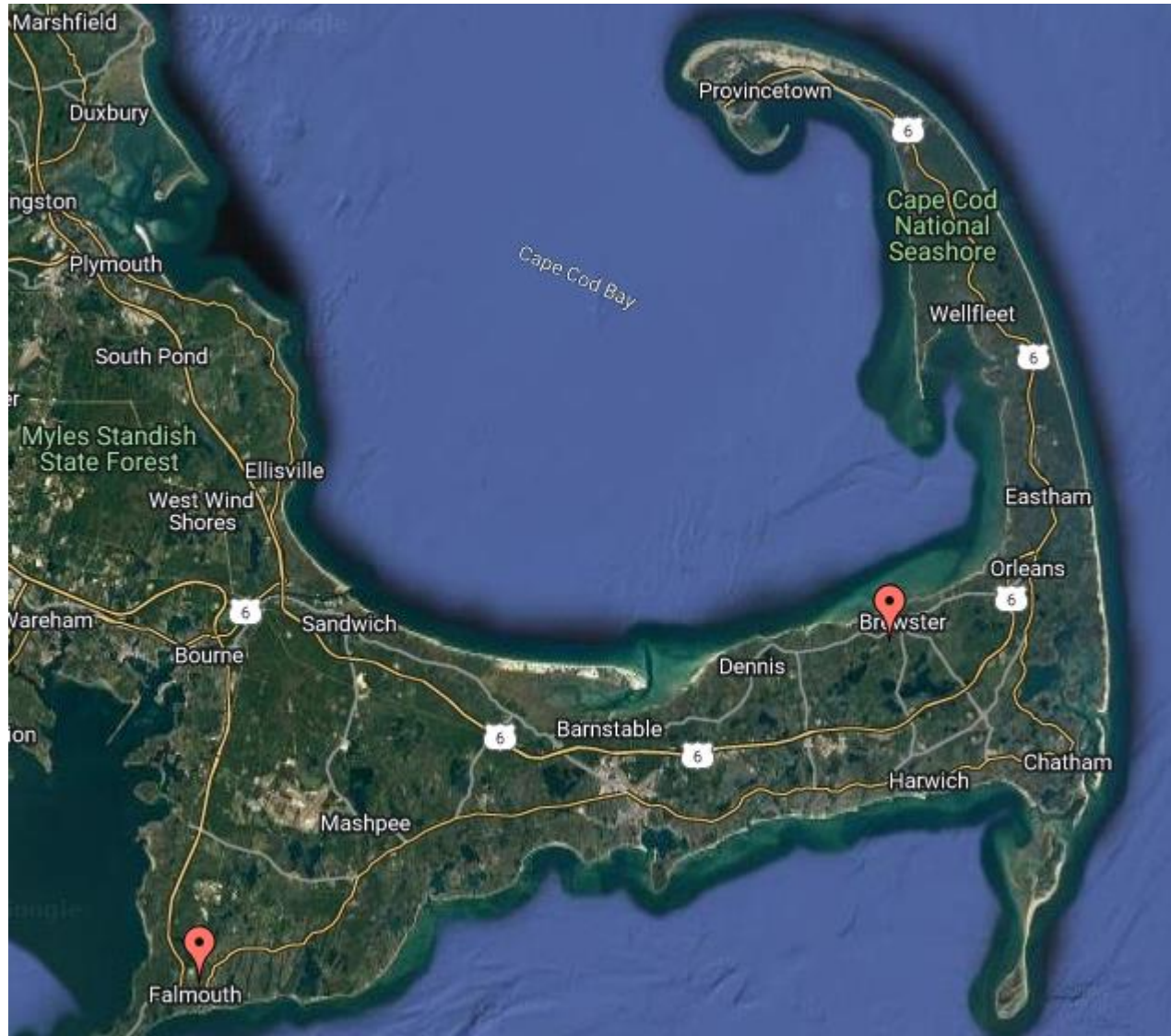
HF Digital Capability

- Only operate if one of the other three HF stations is not being used
- FT8 / FT4
- Time Source ...
 - NTP Server available on the Network
 - Possible Internet Connection
 - HotSpot Card

Field Day Exchange

- Callsign – W1MA
- CLASS – 3A
- Section – EMA (Eastern Mass)
- GOTA Callsign – KW1CC

ARRL FIELD DAY LOCATOR



LAPTOPS –

Reese / KC1MZQ has offered to supply

- HF Station #1
- HF Station #2
- HF Station #3 – CW (Jack may bring his ??)
- 6 Meter
- GOTA
- Projector Driver - project the N1MM scoring summary panel
- Spare (just in case)

Individuals providing station equipment may bring their own laptop

- We'll load the correct version of the N1MM logging software

Bonus Point Chasers

Bonus Point Category		Possible Points	WHO
Emergency Power – 3 Transmitters @ 100 each)		300	Everyone
Media Publicity - press release, article in paper, etc		100	Rob /K1UI
Setup In Public Place		100	Everyone
Social Media		100	??WHO??
Information Table		100	Need someone
NTS Message to ARR SM		100	LEM / W1LEM
Formal NTS Msg Handled 10@10pts MAX: 100		100	LEM / W1LEM
W1AW Bulletin (CW, Digital)		100	Need at least 2
Natural Power QSO for 5 QSOs		100	?? who ??
Site Visited by Elected Official (Bruce Confirmed – Sat visit)		100	Mary Chaffee
Site Visited by Served Agency official -- Frank / WQ10 ?		100	
Education Activity- Winlink demo, FT8 Demo, LOTW ?			?? who ??
# youth who completed at least 1 QSO --@ 20 each (7.3.15)		Depends	GOTA Station
Satellite Contact – only 1 QSO needed		100	?? Who ??
Electronic Web Submission		50	Bruce/Norm
Safety Officer		100	Tam / K1TAM

Get On The Air (GOTA) Station

- Uses a different callsign then W1MA Which one?
 - N1MM logger isolated from W1MA logging net.
- Needs to have a designated GOTA coach present whenever the station is being operated
- Each GOTA operator earns 20 pts for each set of 20 contacts up to 100 pts.
 - In addition to the 20pts they got for their first contact (sec. 7.3.15)
- Because of the designated GOTA coach .. Each set of 20 contacts is worth 40 points.

!!!!!! !!!! WE NEED GOTA COACHES This Year !!!!!!!!!!!!!!!!!!!!!!!!!!!!!
(sign up for a shift when you're not operating)

2022 W1AW FIELD DAY BULLETIN SCHEDULE

Day	Mode	Pacific	Mountain	Central	Eastern	UTC
FRIDAY	CW	5:00 PM	6:00 PM	7:00 PM	8:00 PM	0000 (Sat)
	Digital	6:00 PM	7:00 PM	8:00 PM	9:00 PM	0100
	Phone	6:45 PM	7:45 PM	8:45 PM	9:45 PM	0145
	CW	8:00 PM	9:00 PM	10:00 PM	11:00 PM	0300
SATURDAY	CW	7:00 AM	8:00 AM	9:00 AM	10:00 AM	1400
	Phone	8:00 AM	9:00 AM	10:00 AM	11:00 AM	1500
	CW	5:00 PM	6:00 PM	7:00 PM	8:00 PM	0000 (Sun)
	Digital	6:00 PM	7:00 PM	8:00 PM	9:00 PM	0100
	Phone	6:45 PM	7:45 PM	8:45 PM	9:45 PM	0145
SUNDAY	CW	7:00 AM	8:00 AM	9:00 AM	10:00 AM	1400
	Phone	8:00 AM	9:00 AM	10:00 AM	11:00 AM	1500
	Digital	9:00 AM	10:00 AM	11:00 AM	12:00 PM	1600

K6KPH Field Day Bulletin Schedule

SATURDAY	CW	7:30 AM	8:30 AM	9:30 AM	10:30 AM	1430
	CW	5:30 PM	6:30 PM	7:30 PM	8:30 PM	0030 (Sun)
	Digital	6:30 PM	7:30 PM	8:30 PM	9:30 PM	0130
SUNDAY	CW	7:30 AM	8:30 AM	9:30 AM	10:30 AM	1430
	Digital	9:30 AM	10:30 AM	11:30 AM	12:30 PM	1630

W1AW will operate on the regularly published frequencies.

CW frequencies are 1.8025, 3.5815, 7.0475, 14.0475, 18.0975, 21.0675, 28.0675, 50.350 and 147.555 MHz.

Digital frequencies are 3597.5, 7.095, 14.095, 18.1025, 21.095, 28.095, 50.350 and 147.555 MHz. (Note: W1AW will transmit the Field Day Bulletin using 45.45 baud baudot, PSK31 {BPSK Mode}, and MFSK16 in this mode order).

Phone frequencies are 1.855, 3.990, 7.290, 14.290, 18.160, 21.390, 28.590, 50.350 and 147.555 MHz.

LAST Year 2021 (COVID)

Score: 5,786 QSO's 1,850 (no GOTA) 11

Participants

- #27 out of all 3A's same power mult
- #2 out of all EMA (all categories same power mult)
 - N1NC (Nashoba Valley ARC) was #1
 - had 579 fewer QSOs but beat us by 356 pts.
- #12 New England Division (all categories , same power mult)

Sunday Tear Down

1400 - 1700

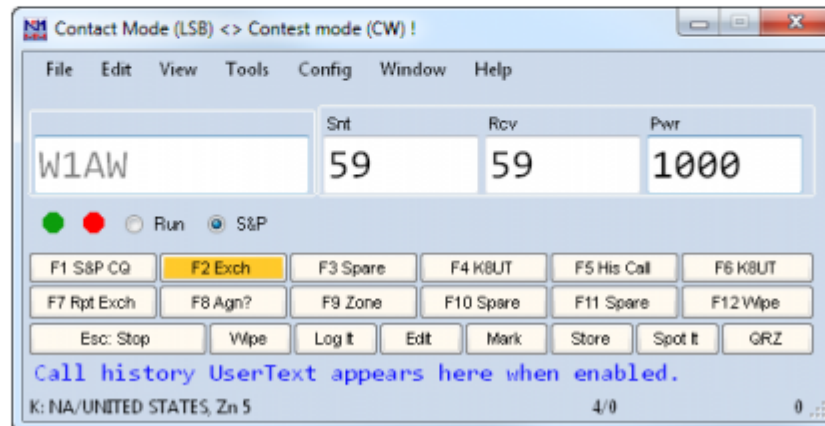
- ❑ Shut down LAN – Backup N1MM Logs
- ❑ Power Down – switch to building AC
- ❑ Disassemble Stations
- ❑ Pack up Laptops
- ❑ Clean Hall
- ❑ Take Down Antenna Farm
- ❑ Pack up equipment to return to container
- ❑ Drive to Container & Drop off BARC equipment

Logging Software



N1MM Logger+

N1MM Logger is the world's most popular ham radio contest logging program. For CW, phone and digital modes, its combination of contest-optimized features is unmatched.



A Lot Of Functionality is available ... but for FD ...

FT-1000MP VFO A

14205.10 SH/DX Wide

0.00 RIT XIT USB

CU6AY 76°
CT3FK 79°

14170

W2RE 40°

14175

TR8CA 92°
CT1JRZ 68°
D2AM 97°
PJ4/EA1PP 163° NEW

14180

14185

KA3HED 94°
KA3HEQ 94°
KJ4PZE 224°
D44TBE 102°
IZ0TRL 56°

14190

14195

Y94D 99° NEW
Y94D 150°
CX4BW 163°
WX3B 94°

14200

14205

J6/DL1VKE 146°
J6/DL1VKE 146°
DX3KQ 30°

14210

W7WA 284°
9K50GS 46°

14215

14220

J79VG 146°
J6/DL1VKE 146°
F6IGS 52°

14225

14230

14235

W1NVT 53°

14240

2/6/2011 18:18:04Z General Logging - ham.mdb

TS	Call	Freq	Mode	SNT	RCV	Prefix	Name	Comment
1/9/2011 18:20:00	Z21BB	14183.11	USB	59	59	Z2	Fernand	icom 706, 3bm, 40
2/1/2011 17:55:00	S500	14216.00	USB	59	59	S5	Miran	
2/4/2011 20:53:12	HK1T	14155.04	USB	59	59	HK	Salim	
2/4/2011 23:25:00	W5B	14267.00	USB	57	57	K	Terry	Spec Evt: Buddy

14205.10 USB FT-1000MP VFO A

File Edit View Tools Config Window Help

WX3B Snt Rcv Name Comment

Wipe Log It Edit Mark Store Spot It Buck

Esc: Stop F1 CQ F2 Exch F3 Thanks! F4 N8IVN

Running F5 His Call F6 QSO B4 F7 QRZ? F8 Again

F9 NR? F10 Prec? F11 CK? F12 Sect?

Bearing = 299°, 614 mi, 987 km, LP = 119°

K - United States, Zone 5, NA 169/88 14,696

Telnet Window - Host: DXC.W4ML.NET - Timeout 60 minutes

Packet Telnet Type: W4ML Close Port

S9 <EA1HLW>

14210.0 J6/DL1VKE 06-Feb-2011 1757Z nil in Saarland

J6 <DL1UF>

14195.0 D44TBE 06-Feb-2011 1757Z only NA

D4 <PD1RK>

14178.2 W2RE 06-Feb-2011 1757Z super signal in Portugal

+K <CT1JRZ>

14091.7 XE1UY 06-Feb-2011 1756Z NO EARS

XE <N7ESU>

14224.0 J79UG 06-Feb-2011 1756Z OK TENERIFE

J7 <EA8AJY>

N8IVN de W4ML 06-Feb 1816Z arc >

DX de F4PHZ: 144288.0 DL2OM IN87KR<TR>J030SN tks QSO

Rolla 1816Z F

DX de W3LPL-3: 21028.0 U31YN/P

+U3 1816Z MD

DX de CT1ETX: 14167.0 CU6AY

+CU 1817Z CT

DX de EA8AKG: 14202.0 Y94D 5+9 TENERIFE GRACIAS

?? 1817Z EA8

BYE CONN DI/N SH/DX USERS W4ML Yes DX NE only No DX No VHF N8IVN

Available - 120 Mult...

Mults	Qs
5	160
18	80
23	40
9	30
27	20
12	17
9	15
7	12
10	10

Info - N8IVN - Exch: 59 CT

WX3B - 14205.10 [PD1WO @ -28 min] - ty james 5/9++

K - United States, Zone 5, NA, Bearing = 299°, 614 mi, 987 km, LP

Sunrise: 13:00Z Sunset: 23:10Z

WWV de VE7CC <18Z> : SFI=81, A=15, K=3, No Storms -> No

Rates - Q's/hour

Last	Last	Since	Since	Last 60 min
Q's	Q's	17:17	18:00	
0	0	0	0	56

Import Goals Goal = 56

N8IVN

17:31:19 N8IVN de WX3B: good ssb contest practice

17:57:59 N8IVN de WX3B: practice is always a good thing

Score - 14,696 Points


Band	Mode	QSOs	Pts	Cty
3.5	LSB	14	14	2
7	LSB	37	37	16
14	PSK3	2	1	2
14	USB	92	92	46
18	USB	2	1	2
21	USB	22	22	20
Total	Both	169	167	88

Score: 14,696

Check - Mult: 160 80...

Unique

N1MM Grayline



N1MM Logging

When you First Sit down ..

At beginning of session -
CTRL-O Set Operator ID

If needed – set Band,

80- enter 3500=====>

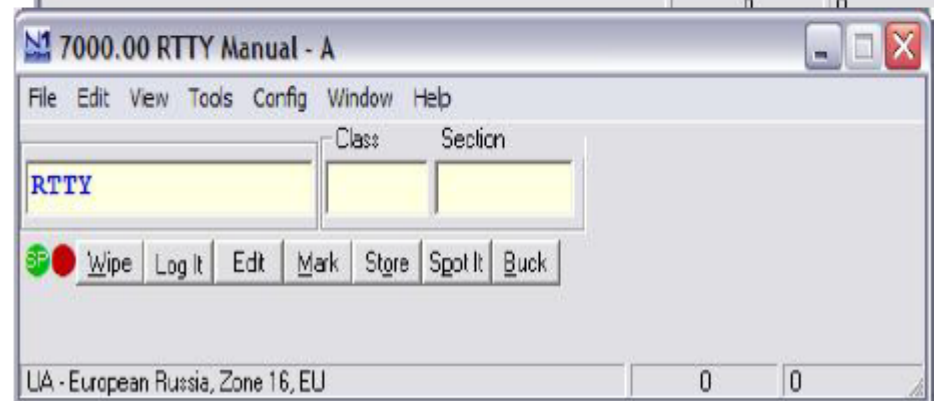
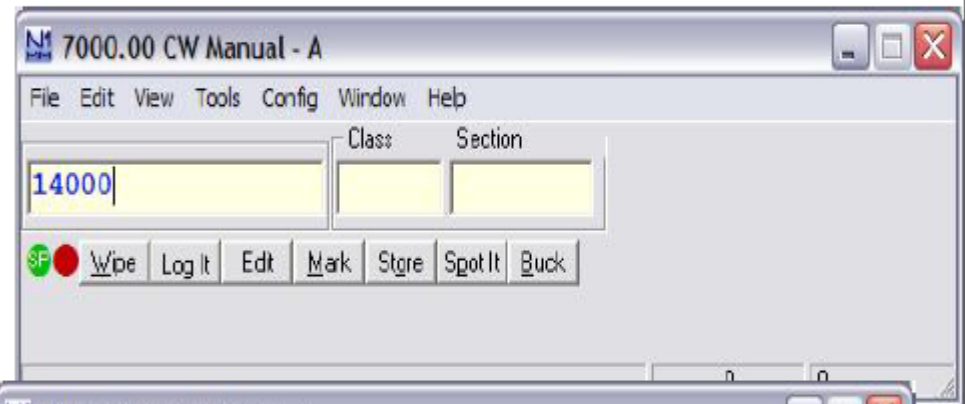
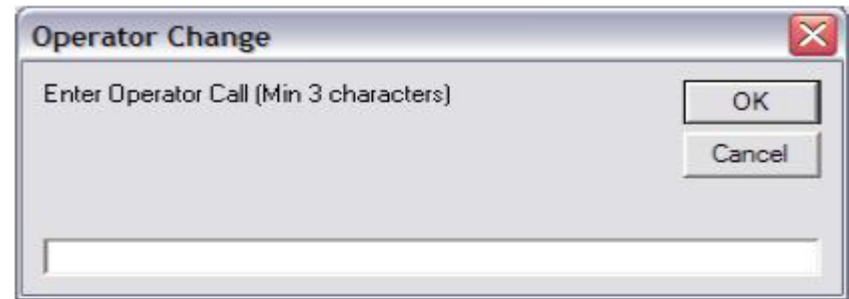
40- enter 7000

20 – enter 14000

etc.

Set Mode

CW, SSB, RTTY ===>



N1MM Logging ..

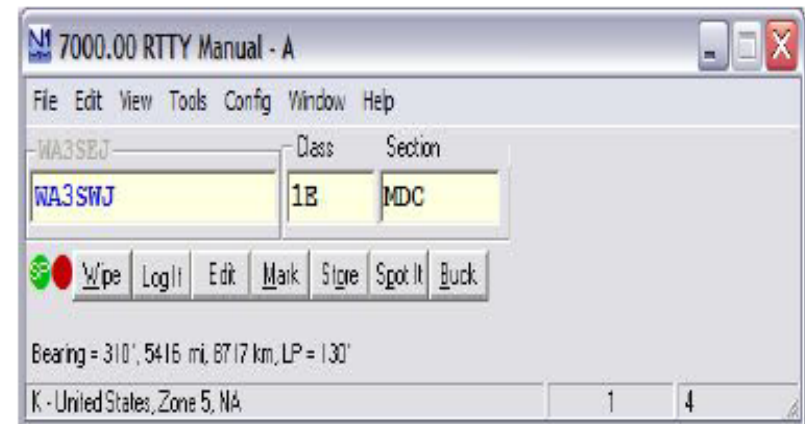
After that you typically only interact with 1 dialog box

Log a QSO ..

Enter Callsign {tab} or {space}

Enter Class {tab} or {space}

Enter Section **{ENTER}**



CTRL+d – deletes the last contact

CTRL+y – Edit last contact

Home Stations

Call Sign	WHO	Contact
W1VKE	Vin	vin@capegrit.com

Many Hands Make Light Work

- New to the Club – great opportunity to “dive in”
- No previous Field Day Experience Required ..
 - Lots of “Tribal Knowledge” and experts available
- There is more to Field Day than just operating ...
- Lot's of opportunities to help out
- Lot's of opportunities to learn new things

Switch To The Spread Sheets

Four (4) Spread Sheets

- Participant List
 - Who's available to setup / take down, attending Potluck, Sunday Breakfast
- Task List
 - Specific things you can volunteer to take care of
- Operating Schedule
 - 2:00pm Saturday – 2:00pm Sunday
- Home Stations

Station Captain Checklist

- .Radio / backup?
- .Digital Operation Capable?
- .Antenna tuner (if not already inside the transceiver)
- .Work up a Band Usage Plan
- .Power supply (at least 20A peak)
- .Extension power cords
- .Power strips
- .Bandpass filters (Club supplies)
- .Headphones
- .Microphone (preferably mike headset)
- .Foot switch
- .CW paddle
- .CW interface cable for CT
- .Table
- .Chairs
- .Fan
- .External clock
- .Lights for late night operating
- .Tools (wrenches, screwdrivers, hammer, etc.)
- .Power meter, antenna analyzer
- .Y-adapter for multiple headphones
- .Accessories (tape measure, zip ties, soldering iron, connectors, etc.)
- .Pens and pencils
- .Blank paper / pads
- .*** operator Schedule **
- .*** Band Usage coordination plan ***

Last Minute Thoughts ...

- ✓ For Personnel Equipment
 - ✓ Mark everything
 - ✓ Keep a “What I brought” list – so you can use it on Sunday to pack your self back up –